

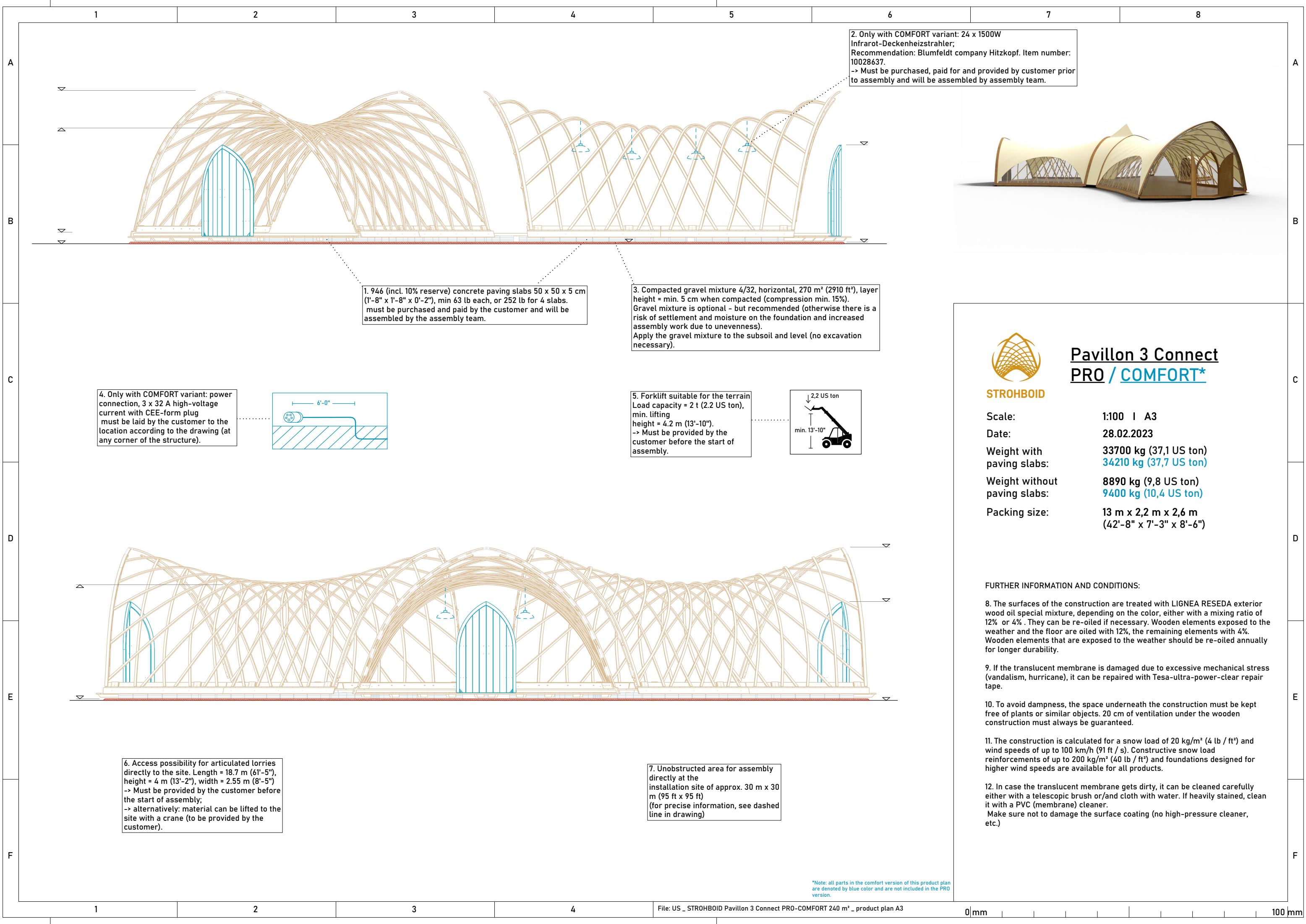
# Pavillon 3 Connect PRO / COMFORT\*

Scale:	1:100   A3
Date:	28.02.2023
Weight with paving slabs:	33700 kg (37,1 US ton) 34210 kg (37,7 US ton)
Weight without paving slabs:	8890 kg (9,8 US ton) 9400 kg (10,4 US ton)
Packing size:	13 m x 2,2 m x 2,6 m (42'-8" x 7'-3" x 8'-6")

## FURTHER INFORMATION AND CONDITIONS:

- The surfaces of the construction are treated with LIGNEA RESEDA exterior wood oil special mixture, depending on the color, either with a mixing ratio of 12% or 4%. They can be re-oiled if necessary. Wooden elements exposed to the weather and the floor are oiled with 12%, the remaining elements with 4%. Wooden elements that are exposed to the weather should be re-oiled annually for longer durability.
- If the translucent membrane is damaged due to excessive mechanical stress (vandalism, hurricane), it can be repaired with Tesa-ultra-power-clear repair tape.
- To avoid dampness, the space underneath the construction must be kept free of plants or similar objects. 20 cm of ventilation under the wooden construction must always be guaranteed.
- The construction is calculated for a snow load of 20 kg/m² (4 lb / ft²) and wind speeds of up to 100 km/h (91 ft / s). Constructive snow load reinforcements of up to 200 kg/m² (40 lb / ft²) and foundations designed for higher wind speeds are available for all products.
- In case the translucent membrane gets dirty, it can be cleaned carefully either with a telescopic brush or/and cloth with water. If heavily stained, clean it with a PVC (membrane) cleaner. Make sure not to damage the surface coating (no high-pressure cleaner, etc.)



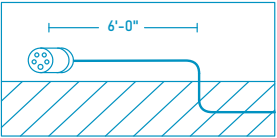


2. Only with COMFORT variant: 24 x 1500W  
Infrarot-Deckenheizstrahler;  
Recommendation: Blumfeldt company Hitzkopf. Item number:  
10028637.  
-> Must be purchased, paid for and provided by customer prior  
to assembly and will be assembled by assembly team.

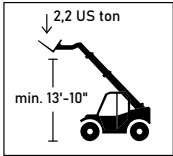
1. 946 (incl. 10% reserve) concrete paving slabs 50 x 50 x 5 cm  
(1'-8" x 1'-8" x 0'-2"), min 63 lb each, or 252 lb for 4 slabs.  
must be purchased and paid by the customer and will be  
assembled by the assembly team.

3. Compacted gravel mixture 4/32, horizontal, 270 m² (2910 ft²), layer  
height = min. 5 cm when compacted (compression min. 15%).  
Gravel mixture is optional - but recommended (otherwise there is a  
risk of settlement and moisture on the foundation and increased  
assembly work due to unevenness).  
Apply the gravel mixture to the subsoil and level (no excavation  
necessary).

4. Only with COMFORT variant: power  
connection, 3 x 32 A high-voltage  
current with CEE-form plug  
must be laid by the customer to the  
location according to the drawing (at  
any corner of the structure).



5. Forklift suitable for the terrain  
Load capacity = 2 t (2.2 US ton),  
min. lifting  
height = 4.2 m (13'-10").  
-> Must be provided by the  
customer before the start of  
assembly.



6. Access possibility for articulated lorries  
directly to the site. Length = 18.7 m (61'-5"),  
height = 4 m (13'-2"), width = 2.55 m (8'-5")  
-> Must be provided by the customer before  
the start of assembly;  
-> alternatively: material can be lifted to the  
site with a crane (to be provided by the  
customer).

7. Unobstructed area for assembly  
directly at the  
installation site of approx. 30 m x 30  
m (95 ft x 95 ft)  
(for precise information, see dashed  
line in drawing)

\*Note: all parts in the comfort version of this product plan  
are denoted by blue color and are not included in the PRO  
version.



### Pavillon 3 Connect PRO / COMFORT\*

Scale:	1:100   A3
Date:	28.02.2023
Weight with paving slabs:	33700 kg (37,1 US ton) 34210 kg (37,7 US ton)
Weight without paving slabs:	8890 kg (9,8 US ton) 9400 kg (10,4 US ton)
Packing size:	13 m x 2,2 m x 2,6 m (42'-8" x 7'-3" x 8'-6")

#### FURTHER INFORMATION AND CONDITIONS:

- The surfaces of the construction are treated with LIGNEA RESEDA exterior wood oil special mixture, depending on the color, either with a mixing ratio of 12% or 4%. They can be re-oiled if necessary. Wooden elements exposed to the weather and the floor are oiled with 12%, the remaining elements with 4%. Wooden elements that are exposed to the weather should be re-oiled annually for longer durability.
- If the translucent membrane is damaged due to excessive mechanical stress (vandalism, hurricane), it can be repaired with Tesa-ultra-power-clear repair tape.
- To avoid dampness, the space underneath the construction must be kept free of plants or similar objects. 20 cm of ventilation under the wooden construction must always be guaranteed.
- The construction is calculated for a snow load of 20 kg/m² (4 lb / ft²) and wind speeds of up to 100 km/h (91 ft / s). Constructive snow load reinforcements of up to 200 kg/m² (40 lb / ft²) and foundations designed for higher wind speeds are available for all products.
- In case the translucent membrane gets dirty, it can be cleaned carefully either with a telescopic brush or/and cloth with water. If heavily stained, clean it with a PVC (membrane) cleaner.  
Make sure not to damage the surface coating (no high-pressure cleaner, etc.)